



# PP Compression Fittings

VERSATILE FITTINGS FOR MODERN INFRASTRUCTURE.

A large blue crosshair graphic is positioned in the top-left corner of the page, consisting of a thick vertical bar and a thick horizontal bar intersecting at the top-left.

**Edoburg<sup>®</sup>**  
PIPING SYSTEMS

About Edoburg	0 4
About Plastic	0 5
Compression Fittings Introduction	0 6
Product Range	0 7
Technical Properties	1 1
Packaging, Storage and Transportation	1 3

# About Edoburg

**Edoburg**, an ISO 9001 certified company, specialises in supplying high-quality piping systems that consistently meet stringent international standards, ensuring unparalleled performance of the piping systems. Our experienced team, equipped with extensive technical knowledge, coupled with our efficient operations and fast turnaround time, enables us to provide top-tier supply of piping products tailored to your needs.

## Our Mission

Edoburg's mission is to supply high-quality piping systems worldwide, offering a complete solution that meets international standards to ensure superior performance in every project.

## Product Range

Our stellar lineup of pipes, ready for every project:

- PEX Pipe: PEX-A, PEX-B, PEX-A EVOH, PEX-B EVOH
- PPR Pipe
- PERT Pipe
- HDPE Pipe
- MDPE Pipe
- PVC-C Pipe: Portable water, Reclaim water, Industrial
- PVC-U Pipe: Drainage, Portable water, Reclaim water, Industrial
- PVC-O
- Composite Pipe: PEX-AL-PEX, HDPE-AL-HDPE
- PVC Electrical Conduit
- PVC Hose

## Complete Solution Concept

Our wide range of products represent our complete solution concept.

With our products intended for diverse sectors, we offer individual and comprehensive system solutions. Focusing on the needs of projects and entire system.

We provide high standards of products in the market at all times. We always stand by our piping systems and reliable service network.

As a global pipe supplying company that stands out with successful operations ever since our incorporation, we act as a solution point to meet all your needs based on our technical knowledge, specialization and reliability.

## Quality Assurance

We are committed to excellence in every aspect of our operations. The products we supply comply with the international standards and certifications, ensuring reliability, durability, and safety in every application. With Edoburg, you can trust that you're receiving top-notch piping solutions that meet your specifications and exceed your expectations.

## Our Presence in the World

Our warehousing are strategically located in various places in **India, Vietnam** and **China**, to ensure efficient distribution of the products. We ensure fast deliveries with our modern logistics partners deployed at our local distribution hubs which are strategically located near the ports to ease the export of products. Edoburg Piping Systems exports its products all over the world.

## Our Market Segments

Based on our experience and high-quality standard of products in the sector, Edoburg Piping Systems supports its clients with a complete piping solutions for every project requirement.

- Chemical and Petrochemical
- Water and Wastewater
- Mining and Mineral Processing
- Power Generation
- Marine and Offshore
- Building and Construction
- Manufacturing Industries
- Agriculture
- Pharmaceuticals
- Infrastructure



# About Plastics

Plastics are polymers created by the chemical conversion of natural products or synthesized from organic materials. The primary components that make up the building blocks of plastics are long chains of carbon (C) and hydrogen (H) known as monomers.

The raw materials used for the production of plastics are natural compounds such as cellulose, coal, oil and natural gas. In the plastics industry, around 6 % of the petroleum products that come out from refineries is used.

Plastics fall into three main categories on the basis of their internal structure and the resulting mechanical characteristics: thermoplastics, thermosetting plastics and elastomers.

### Advantages of Plastics

Thermoplastics obviously demonstrate different characteristics than those of the metals traditionally used for piping.

Metal	Plastic
<b>High density</b> <ul style="list-style-type: none"><li>• Crane is needed for transport.</li><li>• Requires wide spacing for fixings.</li><li>• High anchoring forces, fixing required.</li></ul>	<b>Low density</b> <ul style="list-style-type: none"><li>• Can be carried by hand up to d110.</li><li>• Requires minimal spacing for fixings.</li><li>• Simple and economical.</li></ul>
<b>Thermal conductivity</b> <ul style="list-style-type: none"><li>• Insulation is needed to limit heat loss.</li><li>• Formation may result in corrosion.</li></ul>	<b>Low thermal conductivity</b> <ul style="list-style-type: none"><li>• Limited heat loss.</li><li>• Low levels of condensation and resistance to corrosion.</li></ul>
<b>Corrosion Behaviors</b> <ul style="list-style-type: none"><li>• Galvanic corrosion can occur.</li><li>• Corrosion reduces internal diameter.</li><li>• Reduced diameter causes pressure losses.</li></ul>	<b>High Corrosion Resistance</b> <ul style="list-style-type: none"><li>• Galvanic Corrosion Free.</li><li>• Prevents corrosion and diameter reduction.</li><li>• No pressure losses.</li></ul>
<b>Chemical resistance</b> <ul style="list-style-type: none"><li>• Low Resistance to Acids.</li><li>• Damage from Incrustation.</li></ul>	<b>High chemical resistance</b> <ul style="list-style-type: none"><li>• A minimum of 25-years of life with correct jointing methods.</li><li>• Incrustation free.</li></ul>

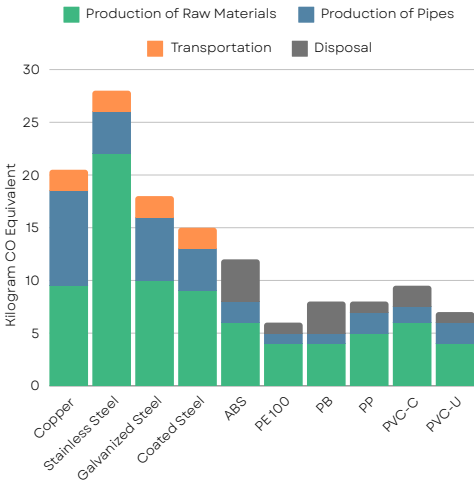
Thermoplastics in turn can be split into two main categories as partially-regulated (semi-crystalline) and iregular (amorphous) molecular structures.

- Semicrystalline thermoplastics, which have a partially ordered molecular structure: this category includes the polyolefins (polypropylene, polyethylene, polybutylene) and fluoropolymers (PP, PE, etc.)
- Amorphous thermoplastics, which have no crystalline regions and no packed molecular structure: this category includes the vinyl chlorides (PVC-U, PVC-C, etc.) and styrenes (ABS, polystyrene, etc.)

Semicrystalline materials are more suitable for hot welding, while amorphous thermoplastics are ideal for cementing or cold welding (solvent cementing).

### Carbon Footprint of Plastics Vs Metal

It is the total of all greenhouse gases emitted to the atmosphere during the entire lifetime including the processes for extracting a product having carbon footprint from under the ground, refining, producing, using and disposing of that product.





# PP Compression Fittings

Edoburg presents a superior range of PP (Polypropylene) Compression Fittings, designed to provide reliable and secure connections across a variety of piping applications. Engineered with precision, our PP compression fittings are renowned for their robustness, ease of installation, and exceptional performance in both domestic and industrial settings.

- **High-Quality Material:** Made from top-grade polypropylene, ensuring excellent resistance to chemical corrosion, UV radiation, and mechanical stress.
- **Leak-Proof Seal:** Designed to provide a tight, secure seal, preventing leaks and ensuring the integrity of your piping system.
- **Easy Installation:** Quick and simple assembly process that saves time and reduces labor costs, with no need for special tools or equipment.
- **Wide Range of Applications:** Suitable for potable water supply, irrigation, industrial fluid transfer, and more.
- **Versatile and Adaptable:** Available in various sizes and configurations to meet diverse application requirements, offering maximum flexibility.
- **Customization:** Options available for tailored solutions to fit specific project needs, enhancing efficiency and cost-effectiveness.

## Fields of Application

- Agriculture
- Construction
- Industry
- Utilities

## Certifications



## Approvals

- Product material certified by WRAS, UK and tested by NSF international, UK as per BS 6920.

## Technical data

### Working Temperature

- -10°C to 45°C

(Suitable for a wide range of diverse climatic conditions.)

### Pipe Standard

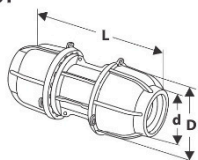
- IS 4984, ISO 4427-2
- EN 12201-2
- AS/NZS 4130
- IS 554
- ISO 7

### Pressure Rating

- PN 16
- PN 20
- PN 10

# Product Range

## Typical dimensional details



### Coupler



Size in mm	Item Code	Std. Packing	d	D	L
20	COMCOUPLRABK	120	21	44 ±1	104 ±1
25	COMCOUPLRBBK	80	26	52 ±1	114 ±1
32	COMCOUPLRCBK	50	33	63 ±1	127 ±1

### Elbow 90°



Size in mm	Item Code	Std. Packing	d	D	L
20	COMCOMPELABK	120	21	44 ±1	64 ±1
25	COMCOMPELBBK	80	26	52 ±1	69 ±1
32	COMCOMPELCBK	40	33	63 ±1	78 ±1

### Male Threaded Adaptor (Plastic)



Size in mm	d1 BSP inch	Item Code	Std. Packing	d	D	L
20	½"	COMPTMTAA1BK	180	21	44 ±1	70 ±1
25	¾"	COMPTMTAB2BK	150	26	52 ±1	76 ±1
32	1"	COMPTMTAC3BK	90	33	63 ±1	87 ±1

### Female Threaded Adaptor (Plastic)



Size in mm	d1 BSP inch	Item Code	Std. Packing	d	D	L
20	½"	COMPTFTAA1BK	180	21	44 ±1	72 ±1
25	¾"	COMPTFTAB2BK	140	26	52 ±1	76 ±1
32	1"	COMPTFTAC3BK	80	33	63 ±1	89 ±1

### Male Threaded Adaptor (Brass)



Size in mm	d1 BSP inch	Item Code	Std. Packing	d	D	L
20	½"	COMMTMTAA1BK	180	21	44 ±1	82 ±1
25	¾"	COMMTMTAB2BK	120	26	52 ±1	87 ±1

### Female Threaded Adaptor (Brass)



Size in mm	d1 BSP inch	Item Code	Std. Packing	d	D	L
20	½"	COMMTFTA1BK	180	21	44 ±1	74 ±1
25	¾"	COMMTFTAB2BK	120	26	52 ±1	82 ±1

### Male Threaded Elbow 90° (Brass)



Size in mm	d1 BSP inch	Item Code	Std. Packing	d	D	L
20	½"	COMMTMTEA1BK	180	21	44 ±1	64 ±1
25	¾"	COMMTMTEB2BK	120	26	52 ±1	71 ±1

### Female Threaded Elbow 90° (Brass)



Size in mm	d1 BSP inch	Item Code	Std. Packing	d	D	L
20	½"	COMMTFTEA1BK	160	21	44 ±1	64 ±1
25	¾"	COMMTFTEB2BK	100	26	52 ±1	71 ±1

## Male Threaded Elbow 90° (Plastic)



Size in mm	d1 BSP inch	Item Code	Std. Packing	d	D	L
20	½"	COMPTMTEA1BK	180	21	44 ±1	64 ±1
25	¾"	COMPTMTEB2BK	140	26	52 ±1	71 ±1
32	1"	COMPTMTEC3BK	70	33	63 ±1	83 ±1

## Female Threaded Elbow 90° (Plastic)



Size in mm	d1 BSP inch	Item Code	Std. Packing	d	D	L
20	½"	COMPTFTEA1BK	180	21	44 ±1	64 ±1
25	¾"	COMPTFTEB2BK	120	26	52 ±1	71 ±1
32	1"	COMPTFTEC3BK	60	33	63 ±1	78 ±1

## Male Threaded Elbow 90° (Brass)

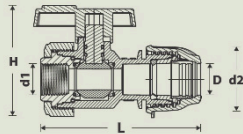


Size in mm	d1 BSP inch	Item Code	Std. Packing	d	D	L
20	½"	COMMTMTEA1BK	180	21	44 ±1	64 ±1
25	¾"	COMMTMTEB2BK	120	26	52 ±1	71 ±1

## Female Threaded Elbow 90° (Brass)

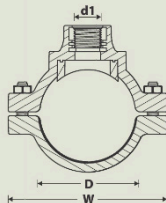
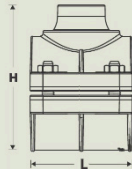


Size in mm	d1 BSP inch	Item Code	Std. Packing	d	D	L
20	½"	COMMTFTEA1BK	160	21	44 ±1	64 ±1
25	¾"	COMMTFTEB2BK	100	26	52 ±1	71 ±1



## Ball Valve

Size in mm	d1 BSP in inch	Item Code	Std. Packing	d2	H	L
20	½"		100	44 ±1	75 ±1	106 ±1
25	¾"		50	52 ±1	82 ±1	120 ±1



## Clamp Saddle

Size in mm	d1 BSP in inch	Item Code	Std. Packing	W±1 mm	H±1 mm	L±1 mm
63	½"	PPCS0631BK16	45	108	100	70
63	¾"	PPCS0632BK16	45	108	100	70
63	1"	PPCS0633BK16	45	108	100	70
75	½"	PPCS0751BK16	33	124	114	80
75	¾"	PPCS0752BK16	33	124	114	80
75	1"	PPCS0753BK16	33	124	114	80
90	½"	PPCS0901BK16	30	144	134	85
90	¾"	PPCS0902BK16	30	144	134	85
90	1"	PPCS0903BK16	30	144	134	85
110	½"	PPCS1101BK16	18	168	163	98
110	¾"	PPCS1102BK16	18	168	163	98
110	1"	PPCS1103BK16	18	168	163	98
125	½"	PPCS1251BK16	15	180	174	100
125	¾"	PPCS1252BK16	15	180	174	100
125	1"	PPCS1253BK16	15	180	174	100
140	½"	PPCS1401BK16	24	200	190	115
140	¾"	PPCS1402BK16	24	200	190	115
140	1"	PPCS1403BK16	24	200	190	115
160	½"	PPCS1601BK16	20	224	212	125
160	¾"	PPCS1602BK16	20	224	212	125
160	1"	PPCS1603BK16	20	224	212	125

\*Note: All dimensions are in 'mm' unless otherwise specified.



**Equal Elbow**  
20mm to 110mm



**90° TEE**  
20mm to 110mm



**Coupler**  
20mm to 110mm



**FTA Brass Elbow**  
Heavy Duty



**MTA Brass**  
20mm to 110mm



**MTA Brass Elbow**  
20mm to 110mm



**End Cap**  
Heavy Duty



**FTA Brass/SS**  
20mm to 110mm



**MDPE Ball Valve**  
20mm



**PP Brass Saddle**  
32mm to 315mm



**PP Brass Saddle**  
32mm to 315mm



**PP Plain Saddle**  
32mm to 315mm



**PP Reducing Saddle**  
32mm to 315mm



**PP Blue Saddle**  
32mm to 315mm



**PP Integrated Saddle**  
32mm to 315mm





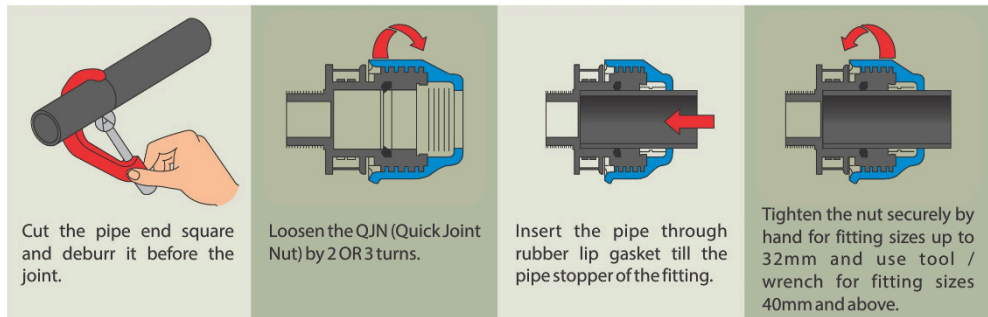
# Technical Properties

Our PP compression fittings are suitable for use with installed directly in to it. Complete range of fittings is all types of polyethylene pipes i.e. PE 80 and PE 100. The designed for 16 bar pressure and it has approvals fitting are provided in ready to use form and can be according to the most stringent regulations. The special installed without any preparations. Without loosening lip gasket provides a perfect performance even with the nut or disassembling the fitting, the pipe can be ovalised or scratched pipes.



- **Pressure Rating:** PN 16
- **Temperature:** Suitable for application between - 10°C to 45°C.
- **Materials:**
  - **Body and Packing Pressure Bush:** Polypropylene PP-B with high stiffness and impact strength.
  - **Quick Joint Nut:** Blue polypropylene copolymer with high stiffness and impact strength.
  - **Clip Ring:** Polyacetal (POM)
  - **Lubricated Lip Gasket:** Food grade NBR is suitable for potable water.
  - **Metal Inserts:** Brass.
  - **Nut-Bolt and Fasteners:** SS 202.
- **Approvals:** Product material certified by WRAS, UK and tested by NSF international, UK as per BS 6920.
- **Standards:** Suitable for Jointing PE Pipes conforming to - IS 4984, ISO 4427-2, EN 12201-2, AS/NZS 4130.
- **Threads:** IS 554/ISO 7
- **Test Standards:** ISO 1452-4, ISO 3458, ISO 3459, ISO 3501, ISO 3503, ISO 4422-4, ISO 17885, AS/NZS 4129.

## Installation Procedure



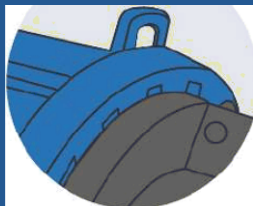
# PP Compression Fittings:

## the perfect polypropylene compression fittings

Our compression fittings are commitment to offer superior products at affordable cost. These fittings offers exclusive benefits like easy, fast and error free installation in any climatic condition, reliable long term performance and economy. In the first phase we have introduced all the fittings in 20, 25 and 32 mm sizes. Our fittings quality is at par with international standards to meet and exceed the expectations of our valued customers.

### Fast and easy installation

Factory assembled fittings are supplied in ready to use form, if necessary unscrew the Quick Joint Nut for easy pipe insertion. As there is no contact between the clip ring and the pipe during insertion the installation of bigger dimensions becomes even easier. It doesn't need any special tools or equipment for the installation.

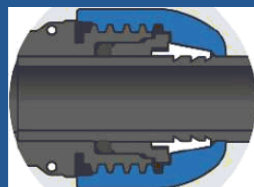


### Tamper proof design

Holders are provided to seal the joint. This special design feature ensures the tamper proof joint and prevents the use of illegal / un-accounted water thus saves the water.

### Safe design and longer life

The special design and the use of quality raw materials ensures high pressure and pull-out resistance even in case of water hammer. As the clip ring is biting the pipe it provides a high pull out resistance and for perfect sealing resistance the packing pressure bush pushes the lip gasket towards the pipe. The design of modular component provides ease of maintenance.



Water Distribution Lines



House Service Connections



Industrial Applications



Mining Industry



Leisure Parks



Golf Courses



Camping Grounds



Farming



Greenhouses



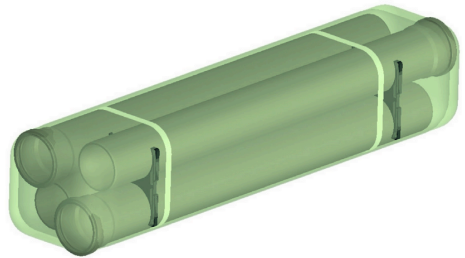
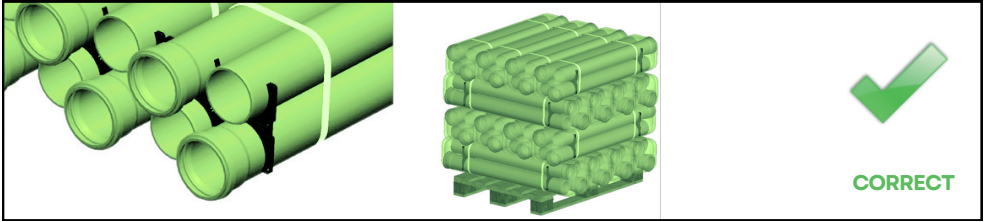
High-end Irrigation



# Packaging, Storage and Transportation

## Packaging

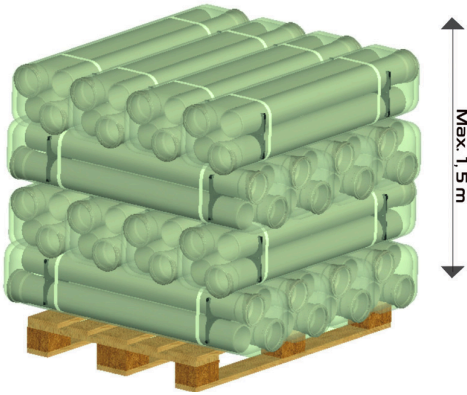
Our pipes and fittings are packed as ready for transport in a customer-friendly way. Packing ensures safety, efficient storage and easy transport.



Pipes are packed by plastic clamps to hold them together. Stretch film is applied to protect pipes from pipes dust and stains.

Short parts with the length of 150, 250 and 500 mm are packed in carton boxes like connection parts.

## Storage

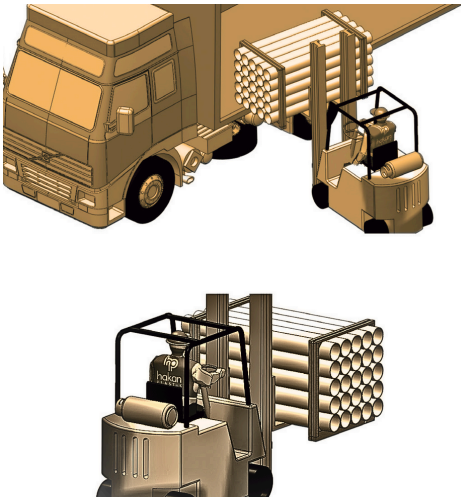


Method of storage should not cause any outflow and should not damage the pipes. As long as they are stored properly, no permanent deformations or damages will occur on the pipes and fittings. Pipes should not be stacked above 1,5 m. Pipes should be safe against sliding.



Pipes and fittings packed in carton boxes should be protected against moisture. Carton boxes should be sealed and stored in a dry area.

## Transportation



Pipes should be carefully transported to prevent any damages. Avoid sudden and hard pressures on pipes and fittings that might cause freezing in cold weather conditions. Ensure that pipes are not slid and dropped on the floor. Loading and unloading and packing of pipes in a block should be carried out by means of forklifts having flat threads and extensions.

Notes

Handwriting practice lines consisting of 20 horizontal dashed lines.

[www.edoburg.com](http://www.edoburg.com)



**Edoburg Piping Systems LLP**  
Reg. Office: 320, Vikas Kunj  
Vikaspuri, Delhi 110018 IN

+1 201 616 0164  
+91 962 585 8500  
[hello@edoburg.com](mailto:hello@edoburg.com)

**Edoburg®**